

PRODUCED AT AN ISO 9001:2015 AND ISO 14001:2015 CERTIFIED FACILITY

COVERED BY MODULE D OF THE PPE REGULATION (EU) 2016/425

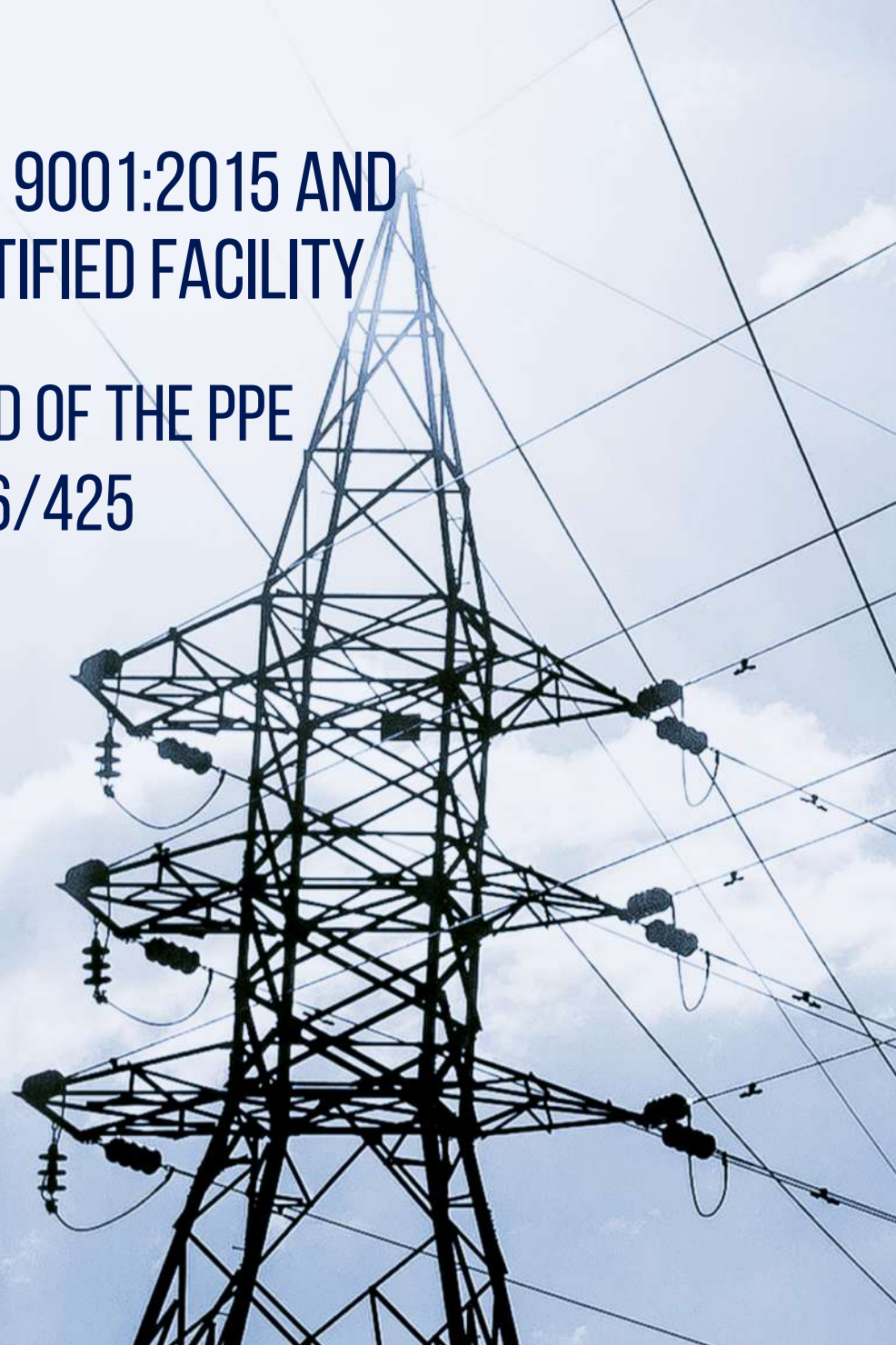
SAFETY



QUALITY



EXCELLENCE



Range	Class 00	Class 0	Class 1	Class 2	Class 3	Class 4
Marking tag colour	Beige	Red	White	Yellow	Green	Orange
Thickness mm (Max) EN 60903*	1.10	1.60	2.10	2.90	3.50	4.10
Thickness mm (Max) ASTM D120	0.75	1.02	1.52	2.29	2.92	3.5
Length mm EN 60903	280, 360 (+/- 15)	280, 360, 410 (+/- 15)	360, 410 (+/- 15)	360, 410 (+/- 15)	360, 410 (+/- 15)	410 (+/- 15)
Length inches ASTM D120	11,14 (+/- 0.5)	11,14,16 (+/- 0.5)	14,16 (+/- 0.5)	14,16 (+/- 0.5)	14,16 (+/- 0.5)	16 (+/- 0.5)
Size range	8, 8 1/2, 9, 9 1/2, 10, 10 1/2, 11	8, 8 1/2, 9, 9 1/2, 10, 10 1/2, 11	8, 8 1/2, 9, 9 1/2, 10, 10 1/2, 11	8, 8 1/2, 9, 9 1/2, 10, 10 1/2, 11	8, 8 1/2, 9, 9 1/2, 10, 10 1/2, 11	8, 8 1/2, 9, 9 1/2, 10, 10 1/2, 11
Cuff profile	Straight (Bead / Cut)	Straight (Bead / Cut)	Straight (Bead / Cut)	Straight (Bead / Cut)	Straight (Bead / Cut)	Straight (Bead / Cut)
PPE Category	III	III	III	III	III	III
Category	A, C	A, C	A, C	A, H, C	A, H, C	A, H, C
Proof test voltage AC (V)	2,500	5,000	10,000	20,000	30,000	40,000
Maximum working voltage AC (V)	500	1,000	7,500	17,000	26,500	36,000
Withstand test voltage AC (V) EN 60903	5,000	10,000	20,000	30,000	40,000	50,000
Minimum breakdown voltage AC (V) ASTM D120	4,000	6,000	20,000	30,000	40,000	50,000

*Includes additional 0.60mm allowed in EN 60903 for categories A and H.

LINEPRO

Field of use

POWER UTILITY COMPANIES

ELECTRICAL WORKSHOPS

INSTALLATION, MAINTENANCE AND REPAIRS INVOLVING HIGH VOLTAGE EQUIPMENT

TELECOMMUNICATION AND TRANSPORTATION INDUSTRIES



RED- STRAIGHT CUFF CUT



DUAL COLOR- STRAIGHT CUFF BEADED



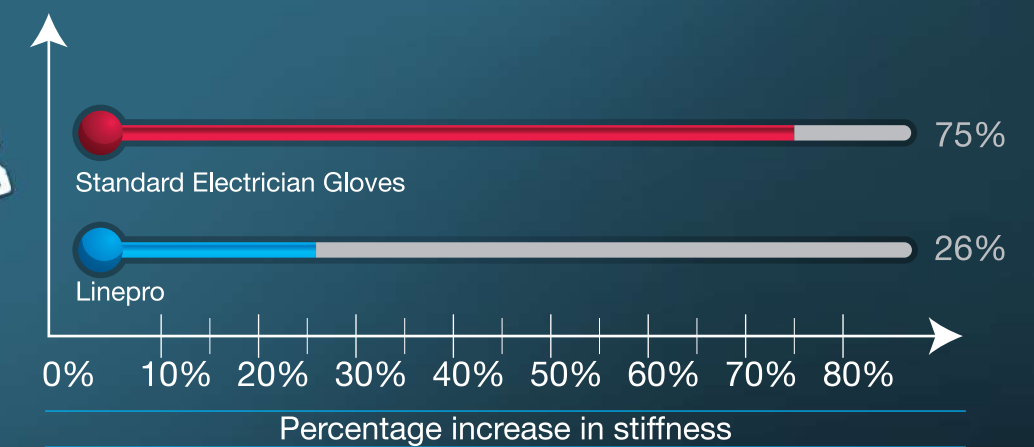
NATURAL- STRAIGHT CUFF CUT



BLACK- STRAIGHT CUFF BEADED



ORANGE- STRAIGHT CUFF BEADED

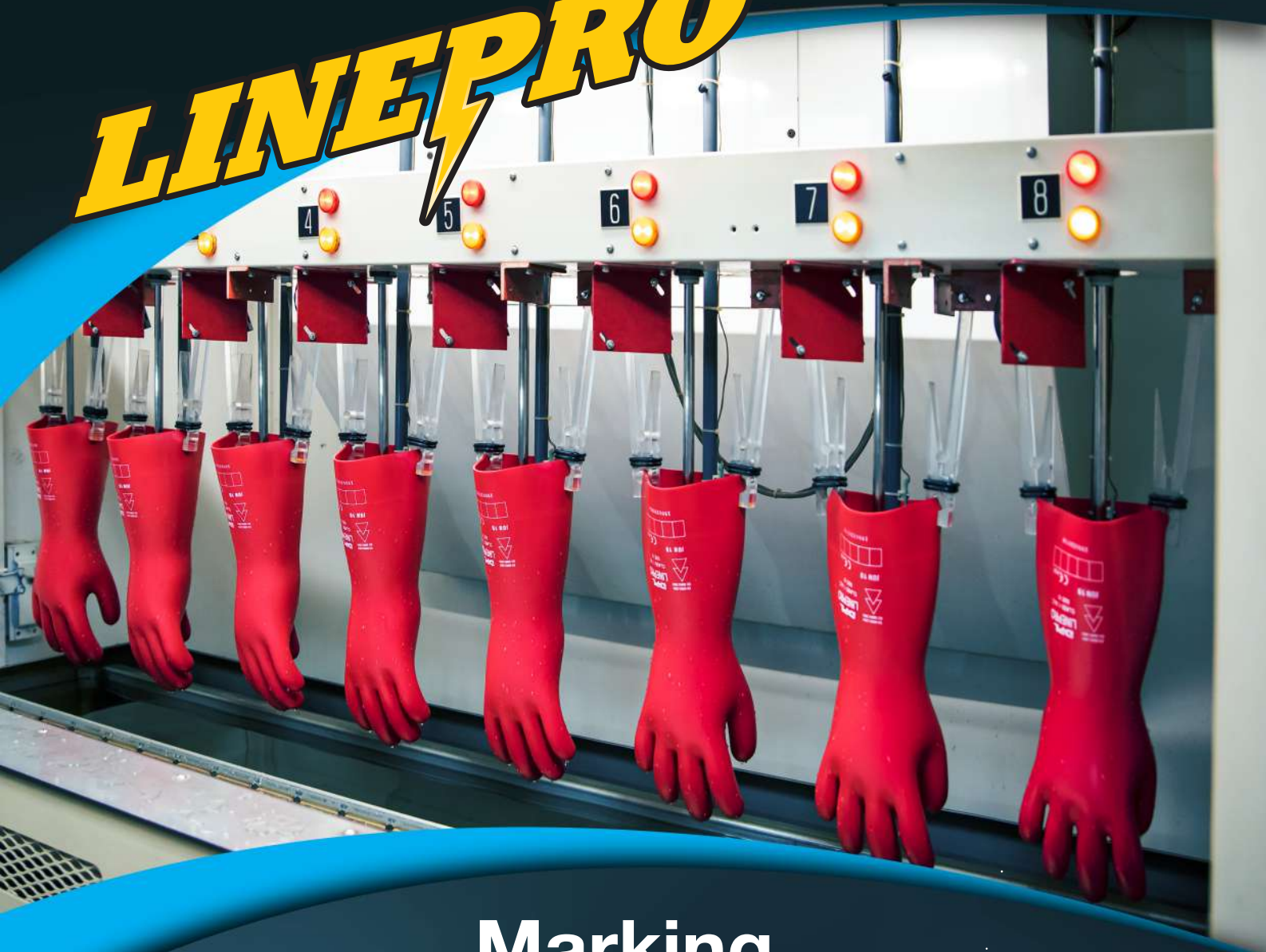


LINEPRO RETAINS ITS FLEXIBILITY 3X BETTER THAN STANDARD ELECTRICIAN GLOVES WHEN EXPOSED TO LOW TEMPERATURE ENVIRONMENTS.

- Each manufacturing step is controlled to assure the quality. Further each glove undergoes 100% quality inspection for electrical property and cosmetic defects
- To ensure the voltage capacity of the gloves we have the voltage tested with our own premium grade test machine that was made in USA
- An innovative drying system has been adopted to enhance the insulating properties of the glove

- Linepro gloves are made with specially treated high grade natural rubber latex compounds from our own DPL plantations that offers superior dielectric properties.
- Its superior anatomical construction and low temperature flexibility results in lower hand fatigue thus enhancing the wearer's comfort for longer durations.
- Being an environmentally concerned company, we follow a latex based dipping process that conforms to eco-friendly standards.
- ASTM/EN colour coded marking shows working voltage for reference and safety
- Packed in opaque UV resistant bags and individual boxes for product protection

LINEPRO



Marking

ASTM D120 - 14a

EN 60903:2003

Each glove is marked with the following on the specific colour coded label:

Each glove is marked with the following:

9 **DPL** **D120**
 ASTM CLAS 0 MAX USE VOLT 1000V AC TYPE I

EN 60903:2003 IEC 60903:2014 **DPL**
LINEPRO
 CLASS 4 / A,C,H
 SIZE 8

CE 0598



DPL
Handling you with care

Dipped Products PLC
 400, Deans Road, Colombo 10, Sri Lanka.
 Phone : +94 112 683 964
 E-mail : marketing@dplgroup.com | Web : www.dplgroup.com

- [facebook.com/DPLSRILANKA](https://www.facebook.com/DPLSRILANKA)
- [linkedin.com/company/dipped-products-plc](https://www.linkedin.com/company/dipped-products-plc)
- twitter.com/DippedPlc
- [instagram.com/dippedproducts.digital](https://www.instagram.com/dippedproducts.digital)
- [youtube.com/Dipped Products PLC](https://www.youtube.com/DippedProductsPLC)



PROTECTING YOU ALWAYS

LINEPRO



DPL
Handling you with care